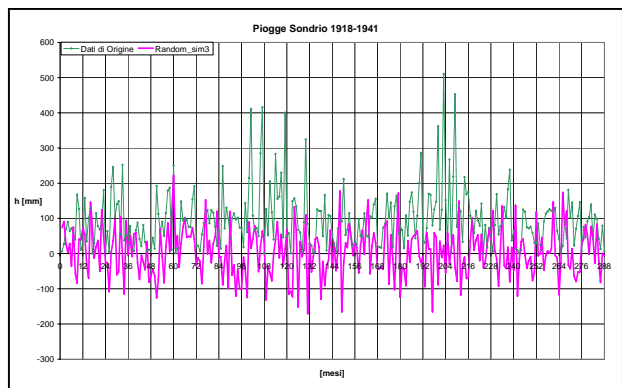
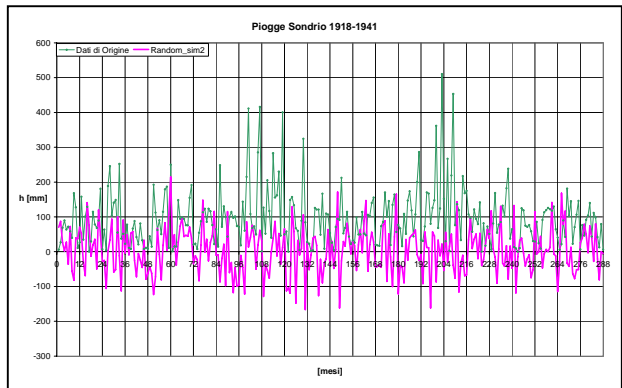
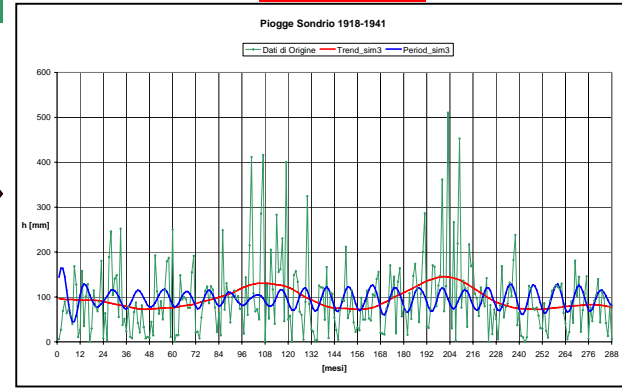
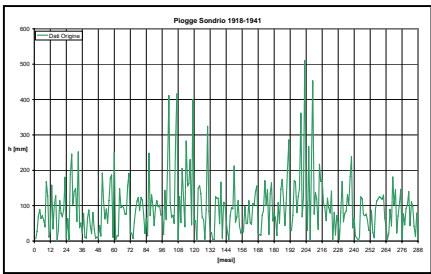
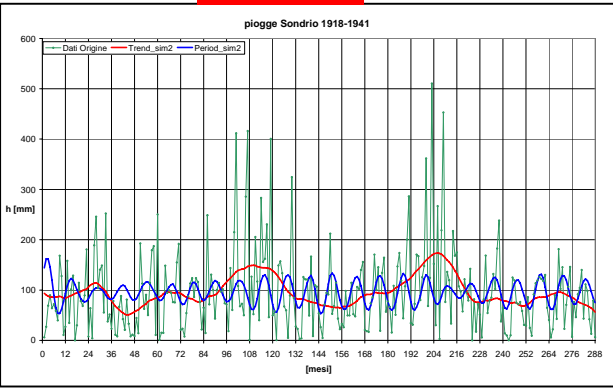


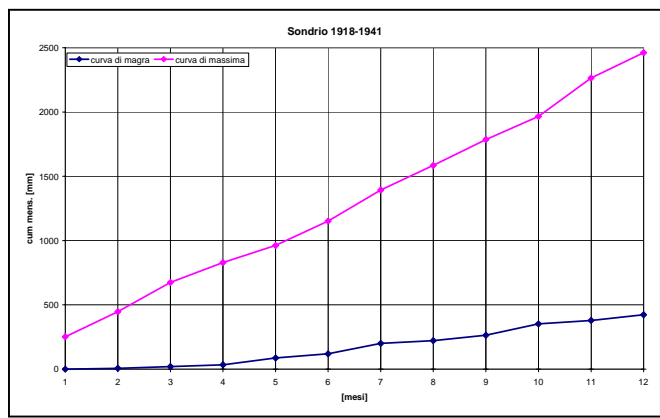
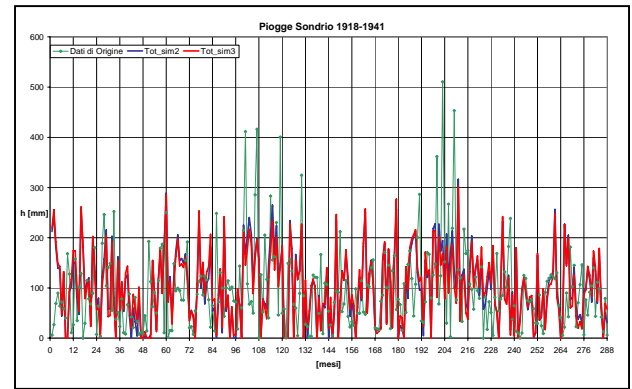
Sim 2

Piogge Sondrio 1918-1941

Sim 3



- **Dati Origine (pigge mens. 1918-1941)**
- **Componente Period**
- **Componente Trend**
- **Componente Random**

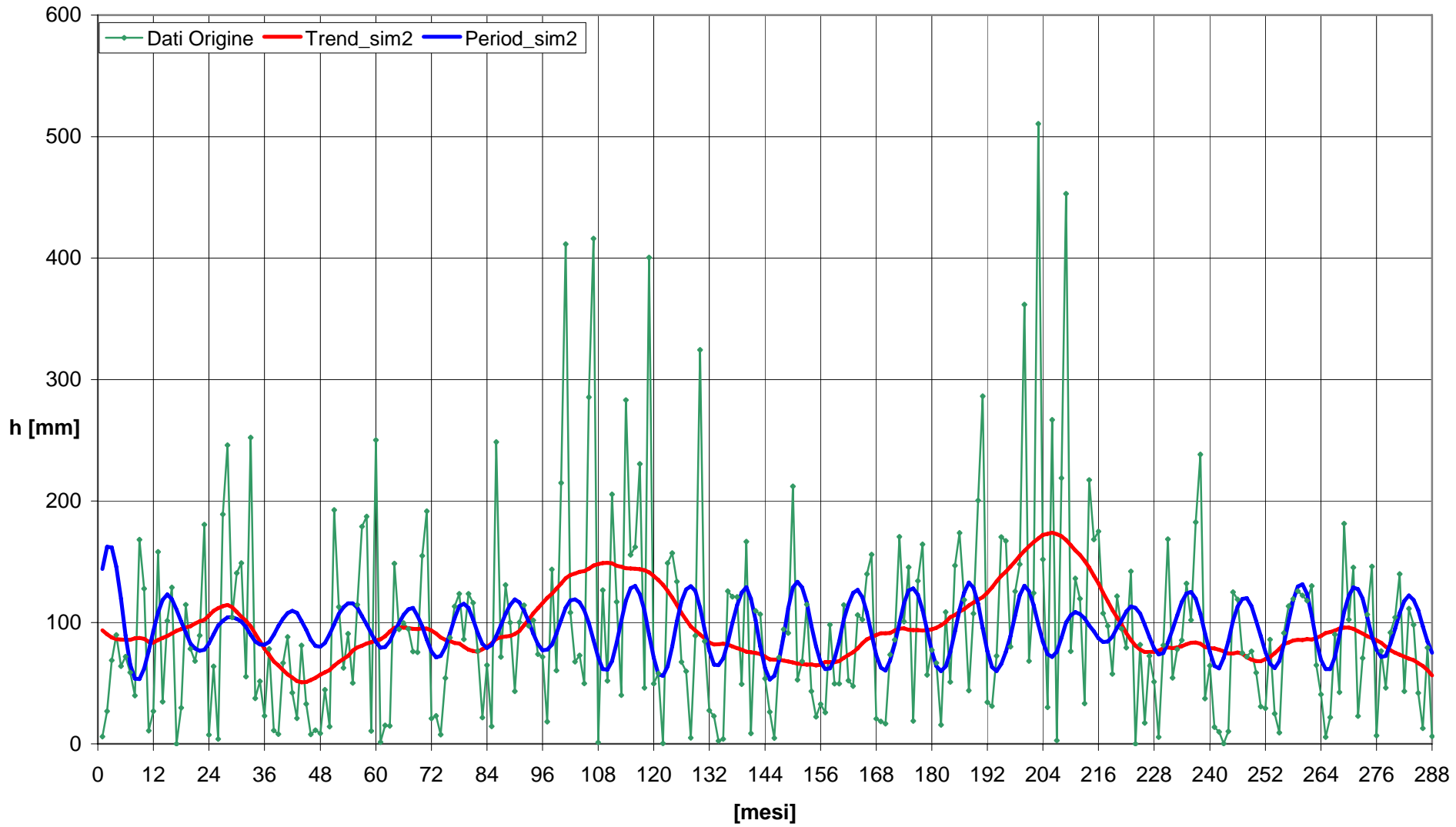


- **Dati di Origine**
- **Tot_sim2**
- **Tot_sim3**

Tot_sim=Period+Trend+Random

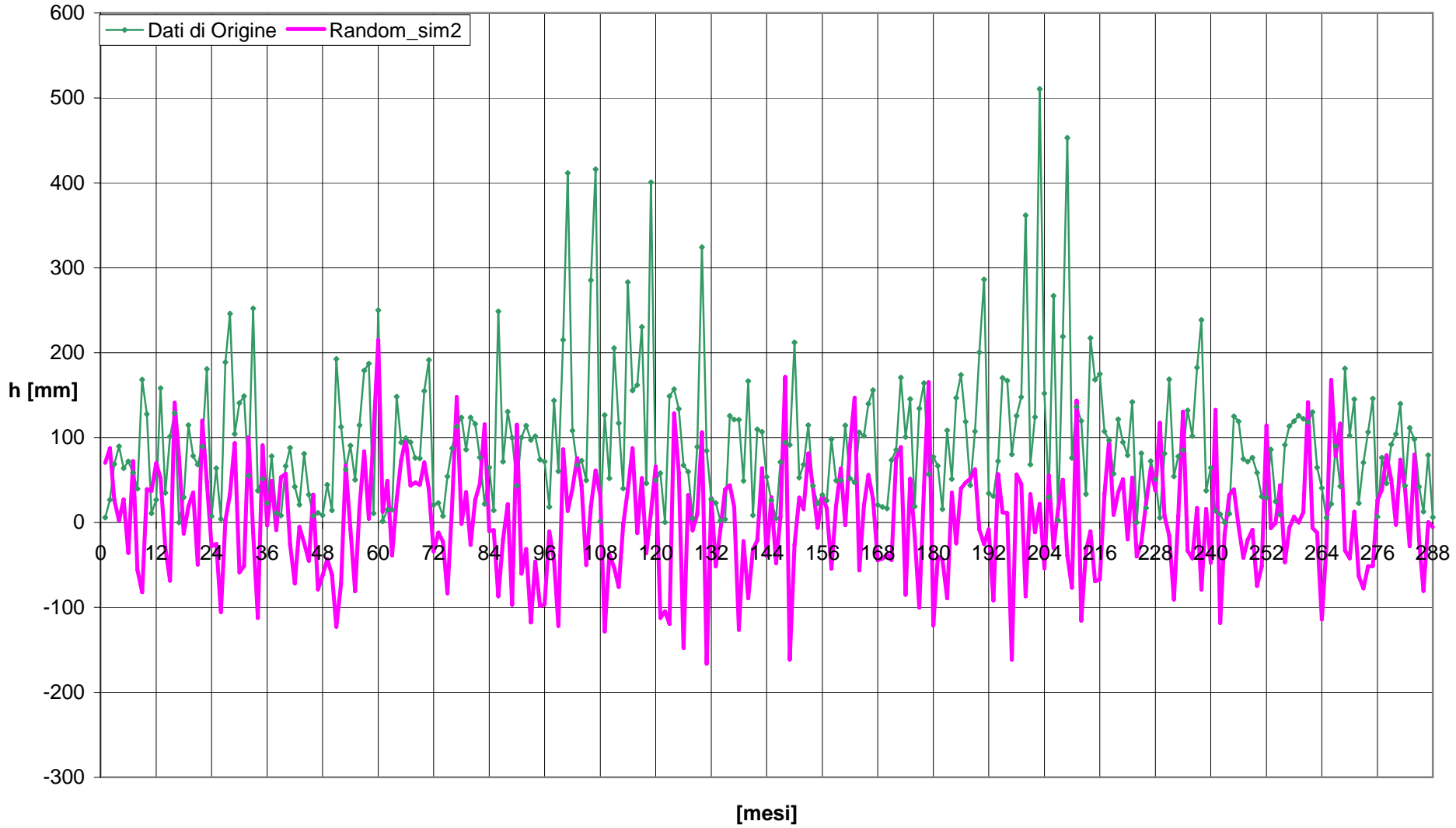
- **Curva di massima**
- **Curva di magra**

piogge Sondrio 1918-1941



Simulazione 2

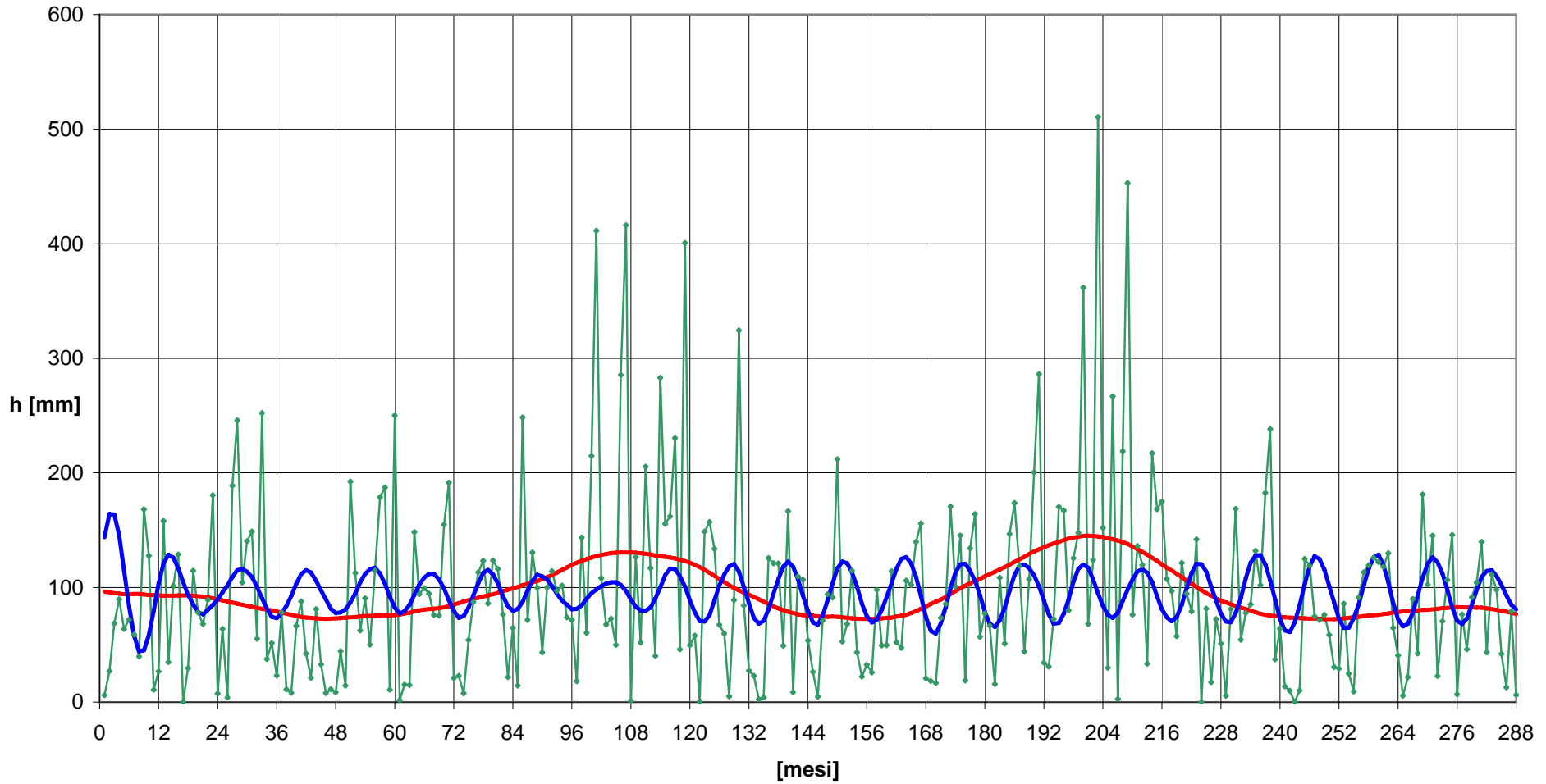
Piogge Sondrio 1918-1941



Simulazione 2

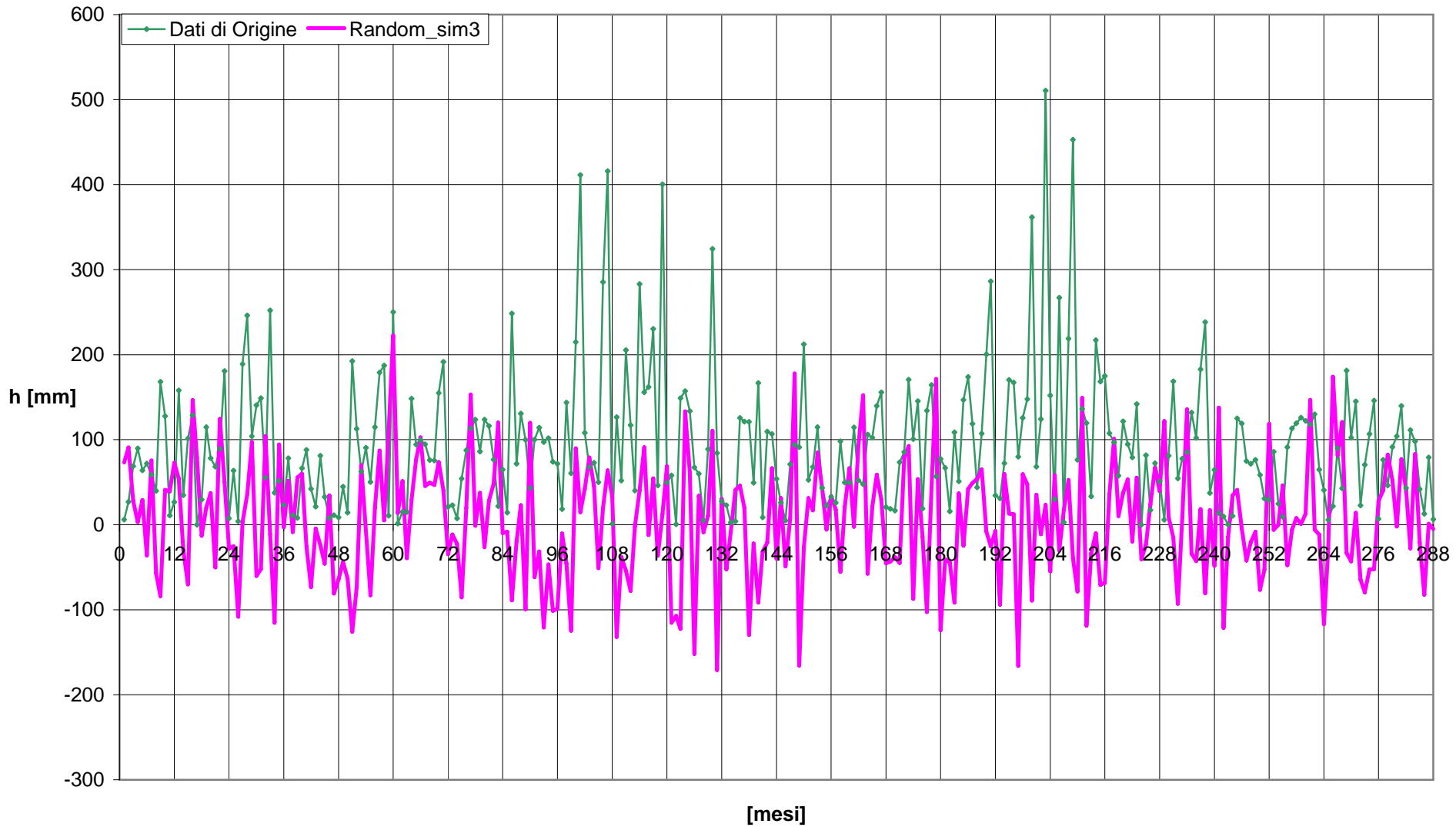
Pioggie Sondrio 1918-1941

Dati di Origine Trend_sim3 Period_sim3



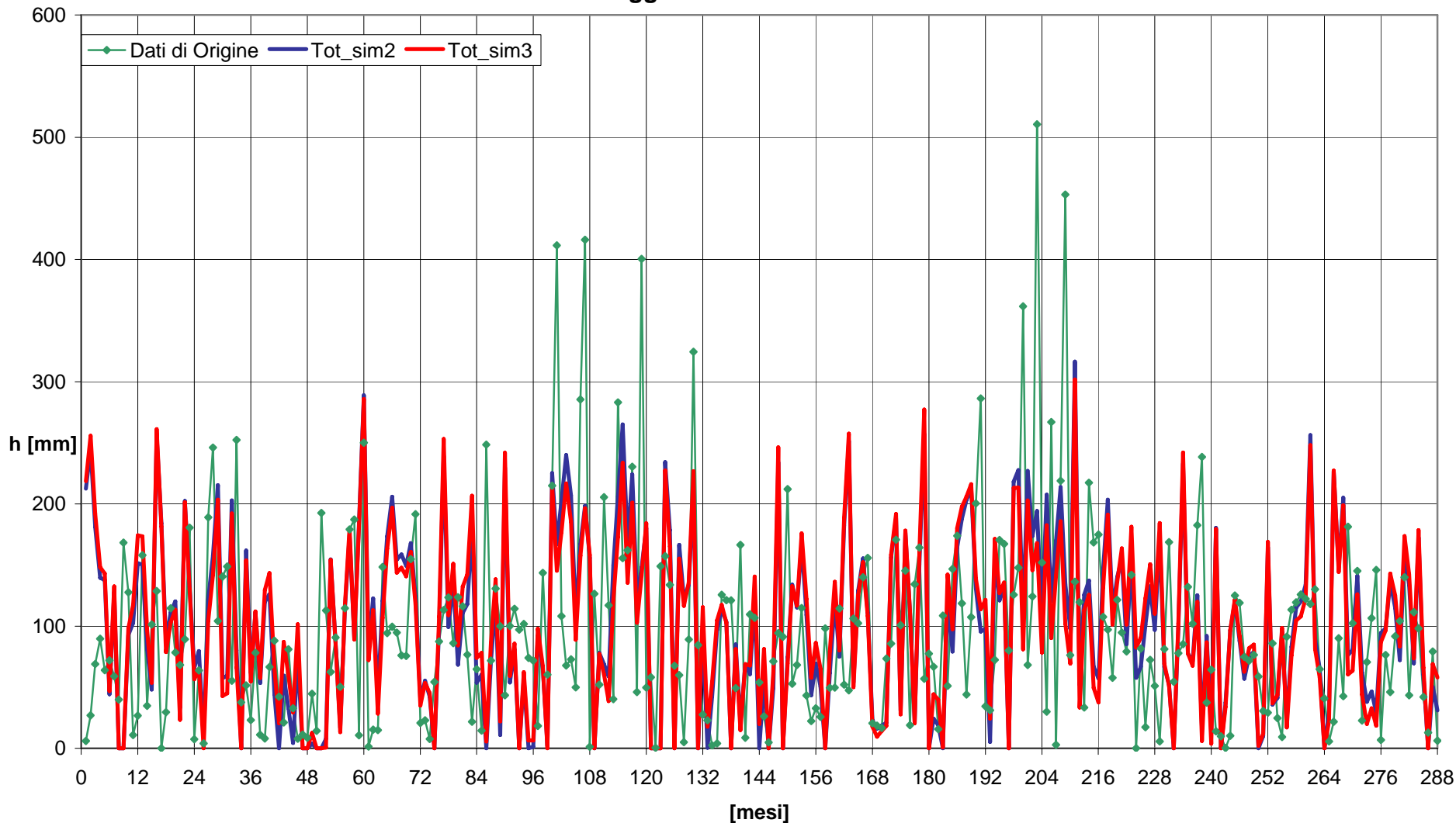
Simulazione 3

Pioggie Sondrio 1918-1941



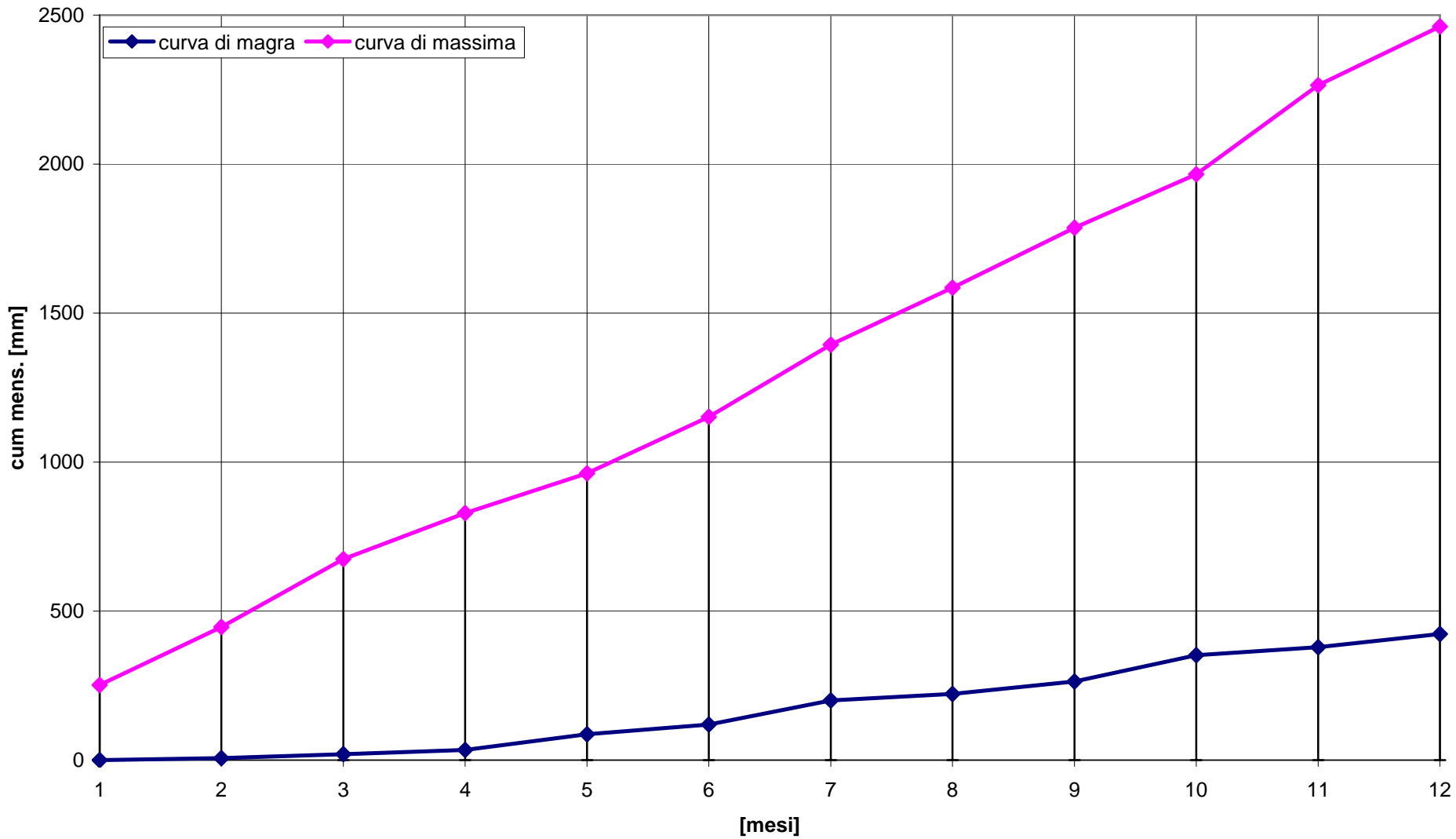
Simulazione 3

Pioggie Sondrio 1918-1941



Confronto tra serie storica e serie sintetiche

Sondrio 1918-1941



Curve di possibilità pluviometrica o di magra